

CARGO PONTOON 100x33

Equipment Specification Sheet

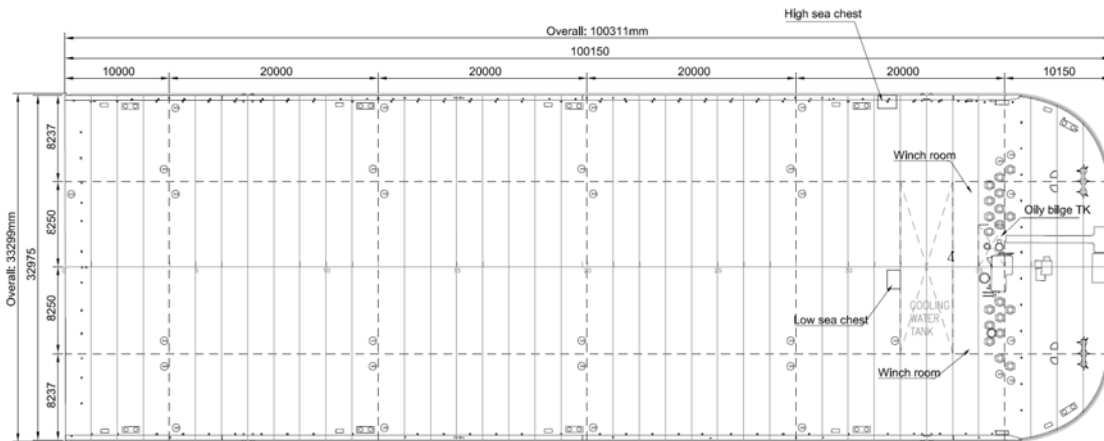
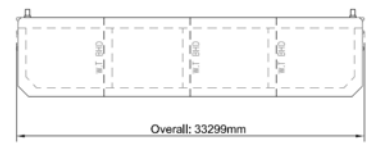
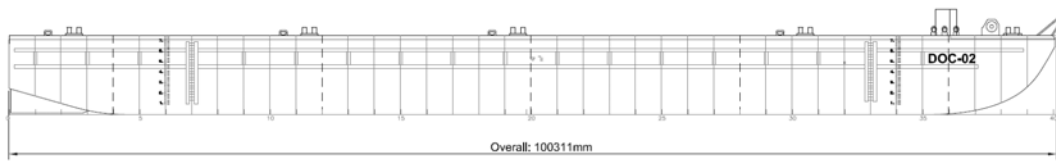
- FLAT TOP CARGO PONTOON
- CLASSIFICATION: BUREAU VERITAS
- PORT OF REGISTRATION: VLISSINGEN
- GROSS TONNAGE: 6745

Main dimensions	100.0 m x 33.0 m x 7.6 m
Deadweight	16031 T
Overall deck strength	15 t/m ²
Available deck space	3000 Sq. meter
Ballast capacity	1x 1200 m ³ /h



Dutch Offshore Contractors BV
4382 NM, Vlissingen
The Netherlands

www.dutchoffshorecontractors.com
info@dutchcontractors.com
T +31 (0)85 273 63 10



TECHNICAL DETAILS

- **Built** China 2011
- **Classification** Bureau Veritas
 | * Hull. Mach pontoon no propulsion
 Unrestricted navigation
- **Length O.A.** 100.00 m
- **Breadth MLD.** 33.05 m
- **Depth MLD.** 7.60 m
- **Summer draft** 6.098 m
- **Light ship weight** 2913 t
- **Water ballast tanks** 20000 m³
- **Fuel oil tank** 12.05 m³
- **Oily water tank** 10.00 m³
- **Frame spacing** 2500 mm
- **Tank layout** 3 longitudinal bulkheads
 5 transverse bulkheads
- **Anchor winch + Anchor Delta Flipper** 5 ton

CARGO PONTOON 100x33



Dutch Offshore Contractors BV
 4382 NM, Vlissingen
 The Netherlands

www.dutchoffshorecontractors.com
info@dutchcontractors.com
 T +31 (0)85 273 63 10